

# Cornea Advance

Introducing

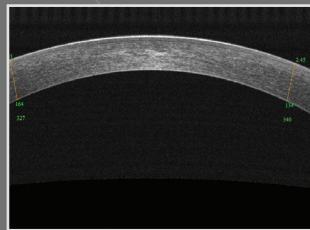
## CORNEA ADVANCE

### Intelligent OCT Imaging for the Anterior Segment

Cornea Advance™ **expands the clinical utility** of your Optovue OCT system to address a broad range of patients. This comprehensive package includes **exciting new technology** as well as the standard anterior segment features you've come to expect from your OCT.

### Pre-Surgical Planning and Post-Operative Assessment

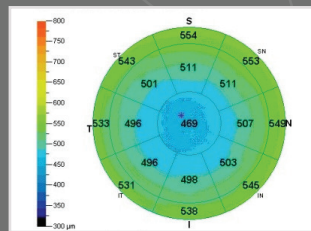
Cornea Advance enables visualization and quantification of anterior segment structures, corneal thickness and epithelial thickness to aid in refractive surgery planning and post-operative care.



#### Cornea B-scan

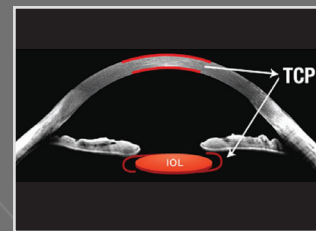
Visualize and measure corneal cross sections

The exclusive **Total Cornea Power (TCP®)** scan provides a precise calculation of the corneal power in post-refractive surgery patients by measuring both the front and back surfaces of the cornea.



#### Pachymetry Map

Quantify corneal thickness and calculate change in thickness between visits.



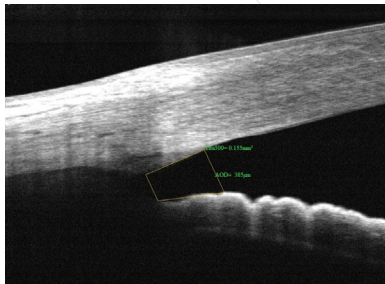
#### TCP

Calculate IOL powers for post-LVC patients.

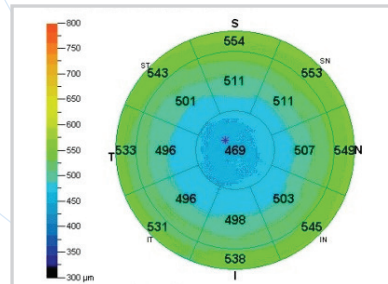
# Glaucoma Diagnosis

Increase your confidence in glaucoma diagnosis and management with Cornea Advance’s angle scan and pachymetry map.

- Assess angle structure with a quick, non-contact scan that can be performed in a dark environment
- Quantify angle parameters with easy-to-use measurement tools
- Evaluate corneal thickness and calculate change in thickness between visits



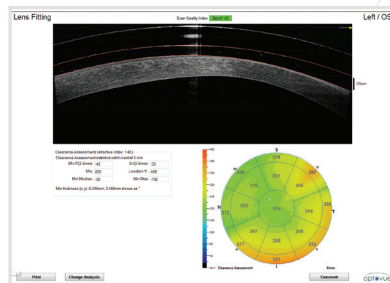
**Angle Scan**  
Visualize and measure angle parameters.



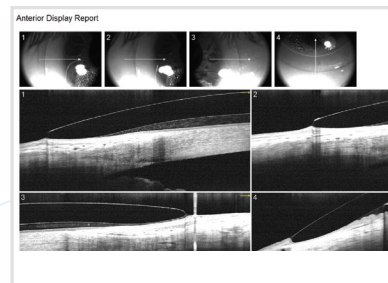
**Pachymetry Map**  
Easily quantify corneal thickness and track change over time.

# Specialty Contact Lens Fitting

Cornea Advance includes the **exclusive Vault Mapping tool** that enables precise visualization of the lens-to-eye relationship for specialty lens fitting.



**Vault Map**  
Visualize and quantify central corneal clearance.



**Anterior Display Report**  
Evaluate superior, temporal, inferior and nasal landing zones.

# Cornea Advance Feature Availability

	OCTA Imaging System	Avanti Widefield OCT	iVue, iFusion & iScan OCT
Cornea B-Scan	•	•	•
Angle Scan	•	•	•
Pachymetry Map	•	•	•
Total Cornea Power	•	•	
Vault Mapping			•